

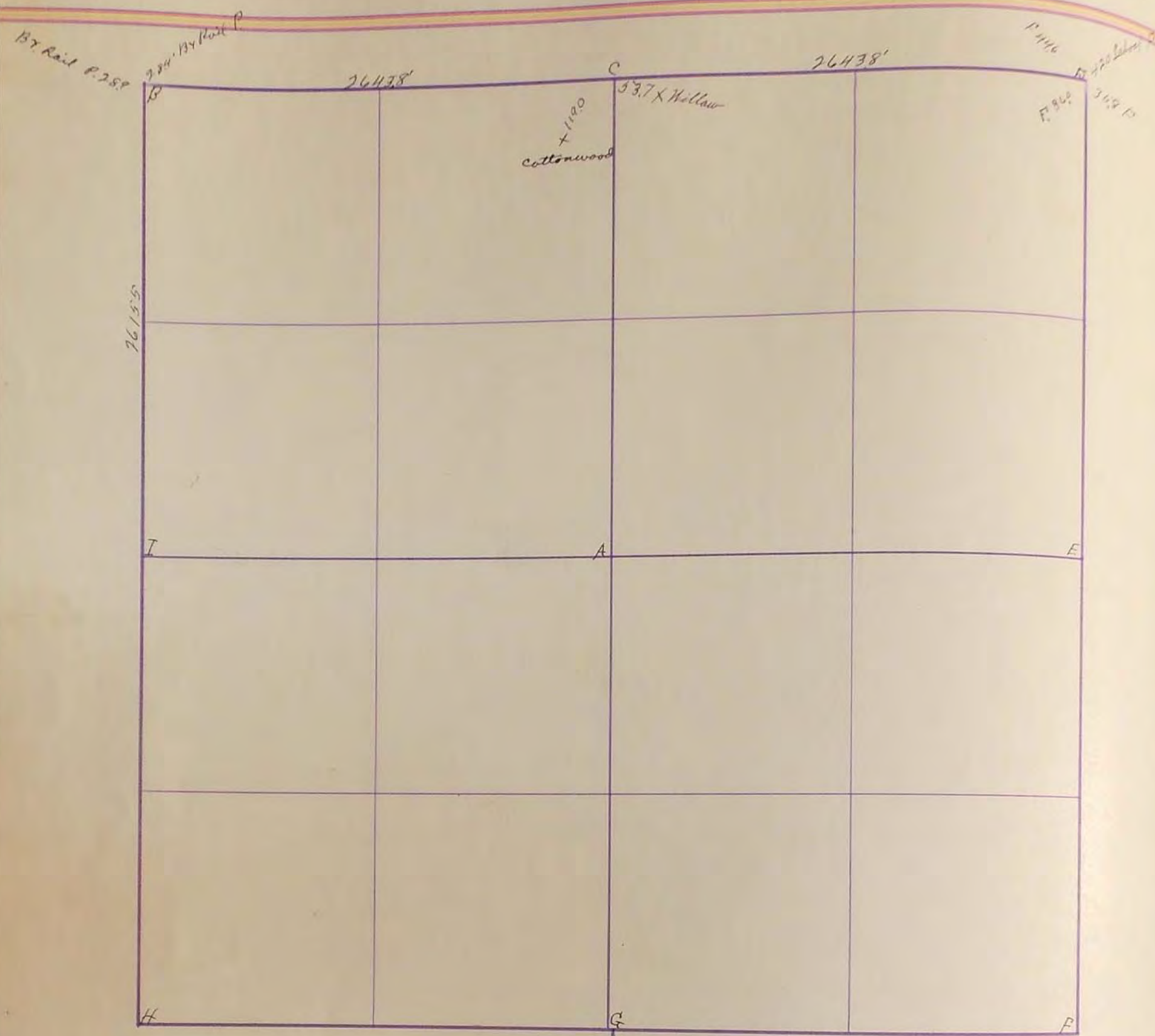
SURVEYOR'S RECORD

Section 2

Township 107

Range 42

2
3



aug 27-1925

- B. gas pipe 1 1/2" 2" below surface
- C. 2" shaft about 3 1/2 ft long
- D. stone

1934 "D" Found stone placed Concrete Stone: R.P. Tack in cor fence post SW 422: Tack in tel pole NW 442: Tack in cor fence NE 422 ¹⁹³⁴ FA March

"F" Placed concrete monument above stone with iron pin above conc. monument 3" below grade: R.P. N&C, 14, S.E., 79.08; R.P. N&C, cor post E/W. 62.01; R.P. N&C Wood post N.E. 77.95; R.P. Hubs with nails West 75' & 150' of corner.

"E" Placed concrete monument with iron pin above: R.P. N&C, cor post W. 52.70; R.P. N&C, R.P. 32. 64.74; R.P. Subs with nails West 75' & 150' of corner

"D" Rads in O&B #19 N. 100', 200' & 300'

"C" Located pointed stone 3' below existing grade with 12" steel fence post above.

"B" Imp. iron pin. 15' north of road centerline.

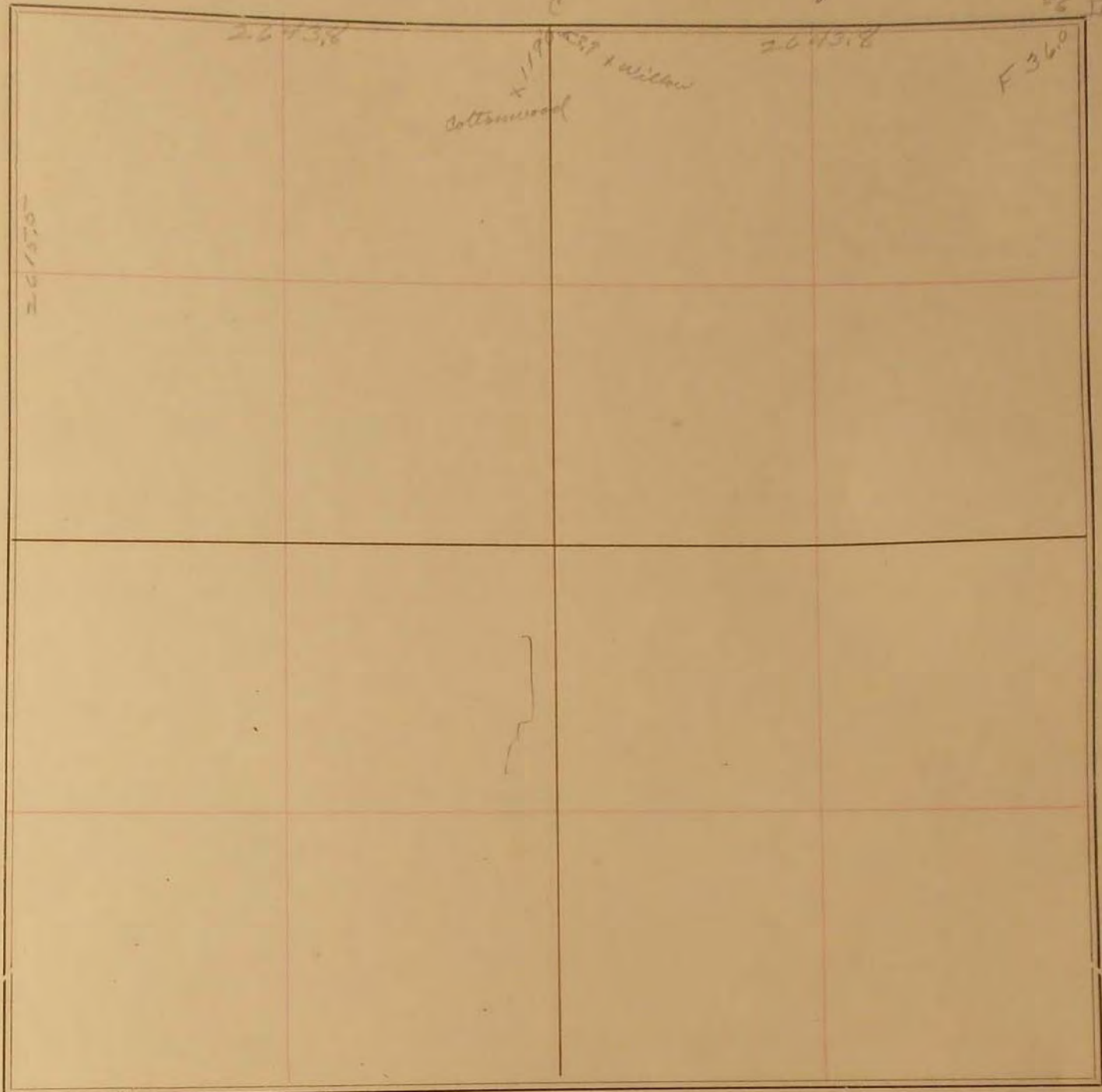
SURVEY No. _____

Br. Rail R. Section Br. Rail R.
289 2847 2

Town 107

Range 42

42.0 Schott F
35.8 F



FIELD NOTES.

Aug 22, 1925

3 feet pipe 12" dia. below surface
0.2' shell about 36' long
I stands